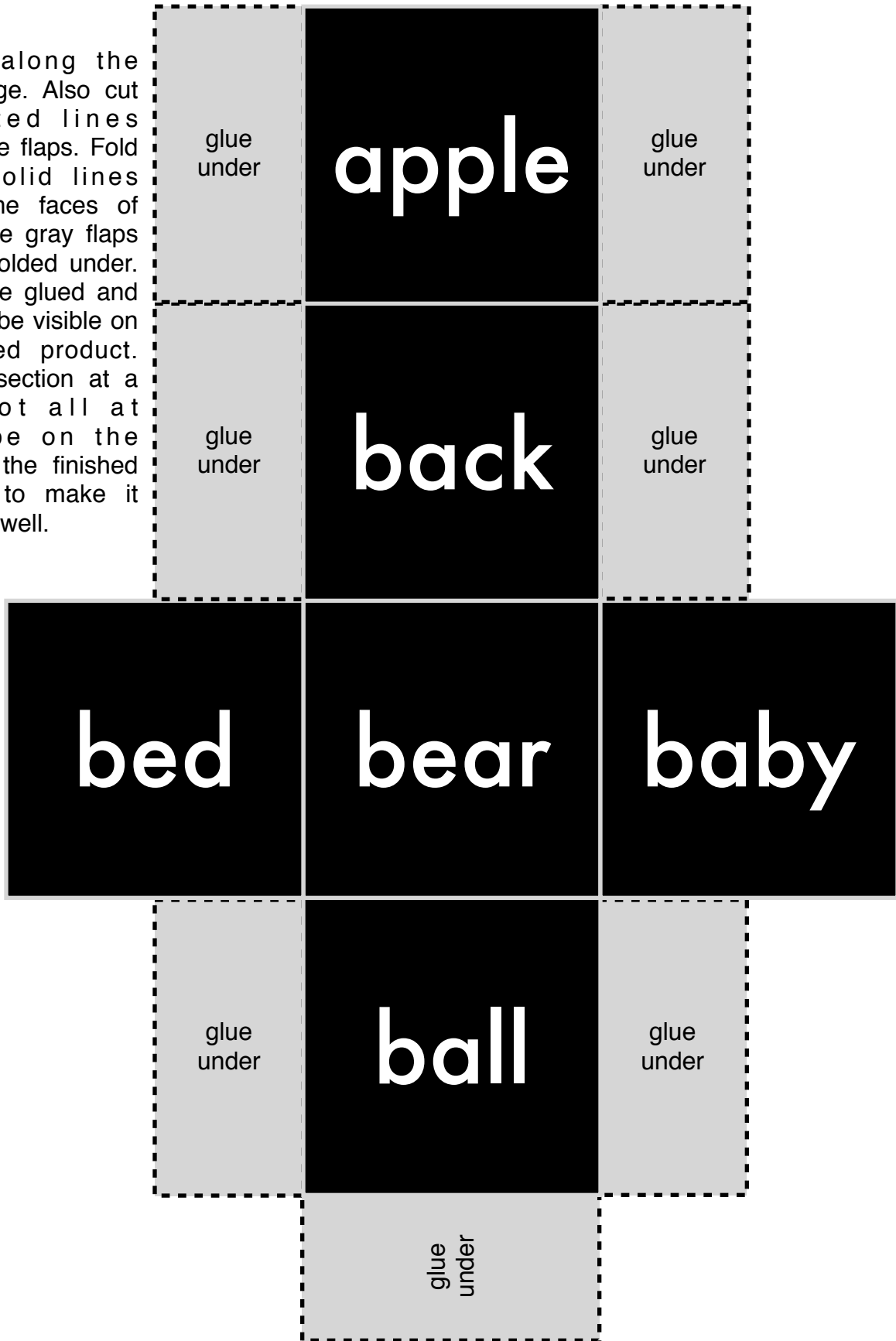


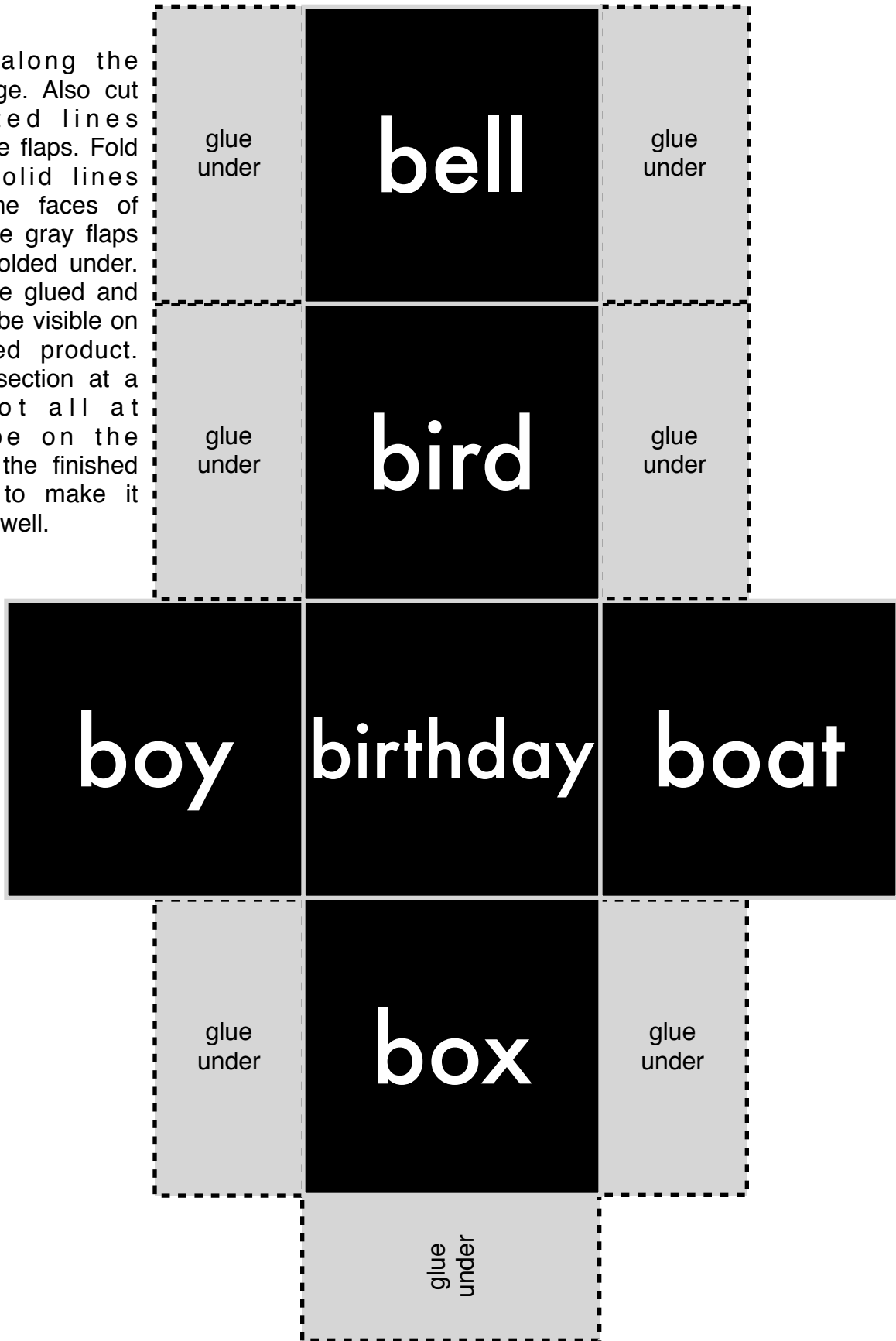
# Nouns Sight Words Dice

Cut out along the outside edge. Also cut the dotted lines between the flaps. Fold on the solid lines between the faces of the die. The gray flaps are to be folded under. They will be glued and should not be visible on the finished product. Glue one section at a time, not all at once. Tape on the outside of the finished die helps to make it sturdier, as well.



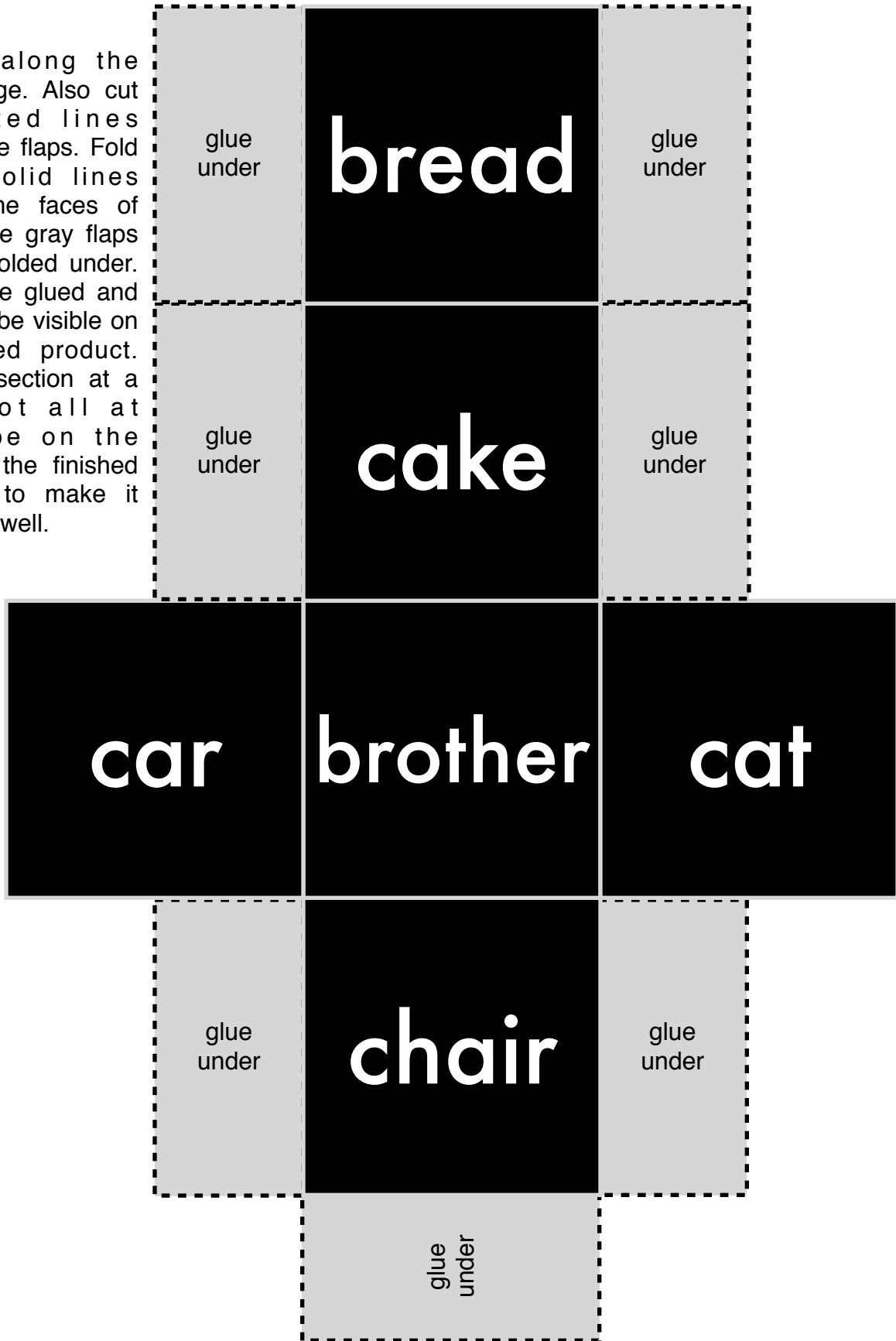
# Nouns Sight Words Dice

Cut out along the outside edge. Also cut the dotted lines between the flaps. Fold on the solid lines between the faces of the die. The gray flaps are to be folded under. They will be glued and should not be visible on the finished product. Glue one section at a time, not all at once. Tape on the outside of the finished die helps to make it sturdier, as well.



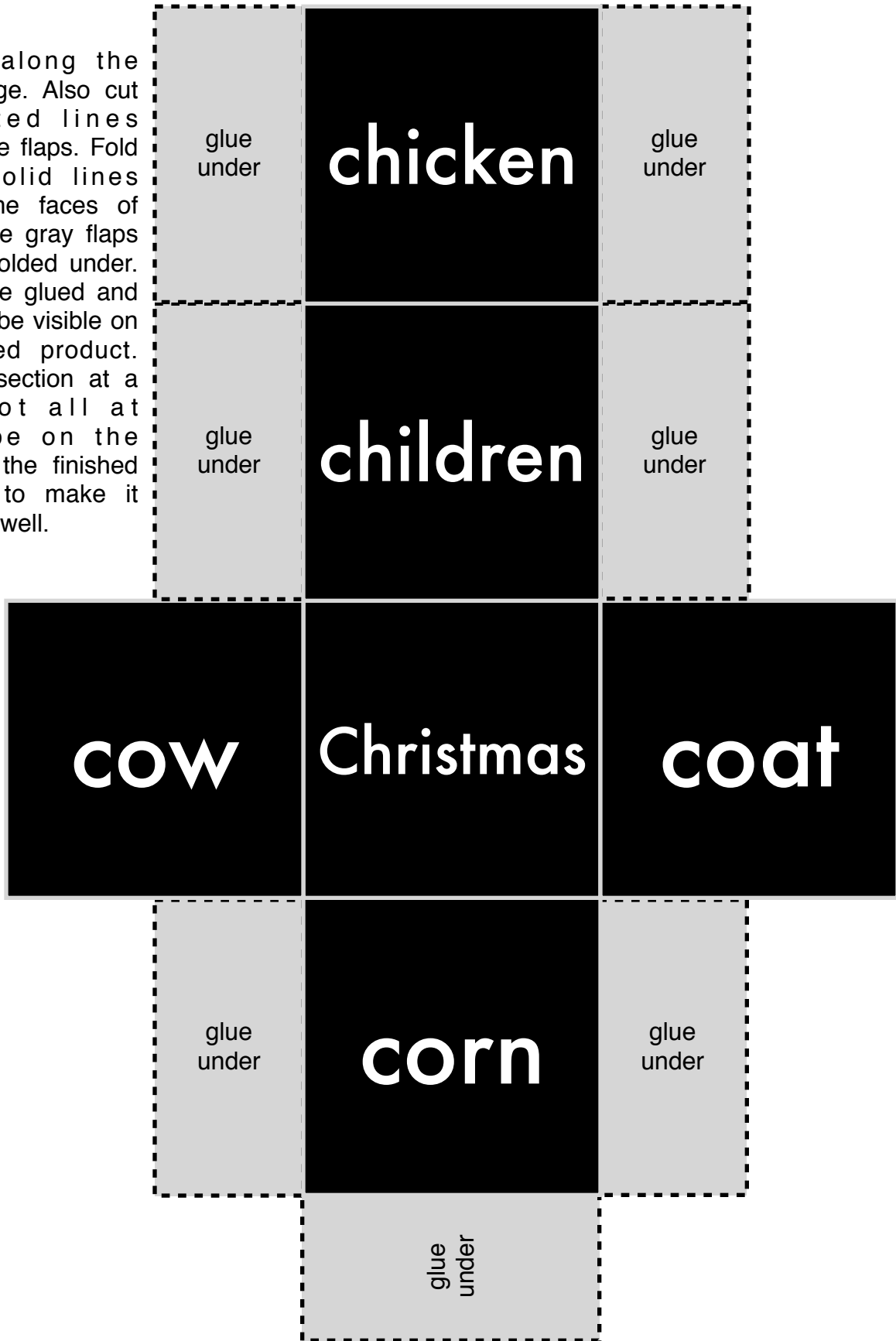
# Nouns Sight Words Dice

Cut out along the outside edge. Also cut the dotted lines between the flaps. Fold on the solid lines between the faces of the die. The gray flaps are to be folded under. They will be glued and should not be visible on the finished product. Glue one section at a time, not all at once. Tape on the outside of the finished die helps to make it sturdier, as well.



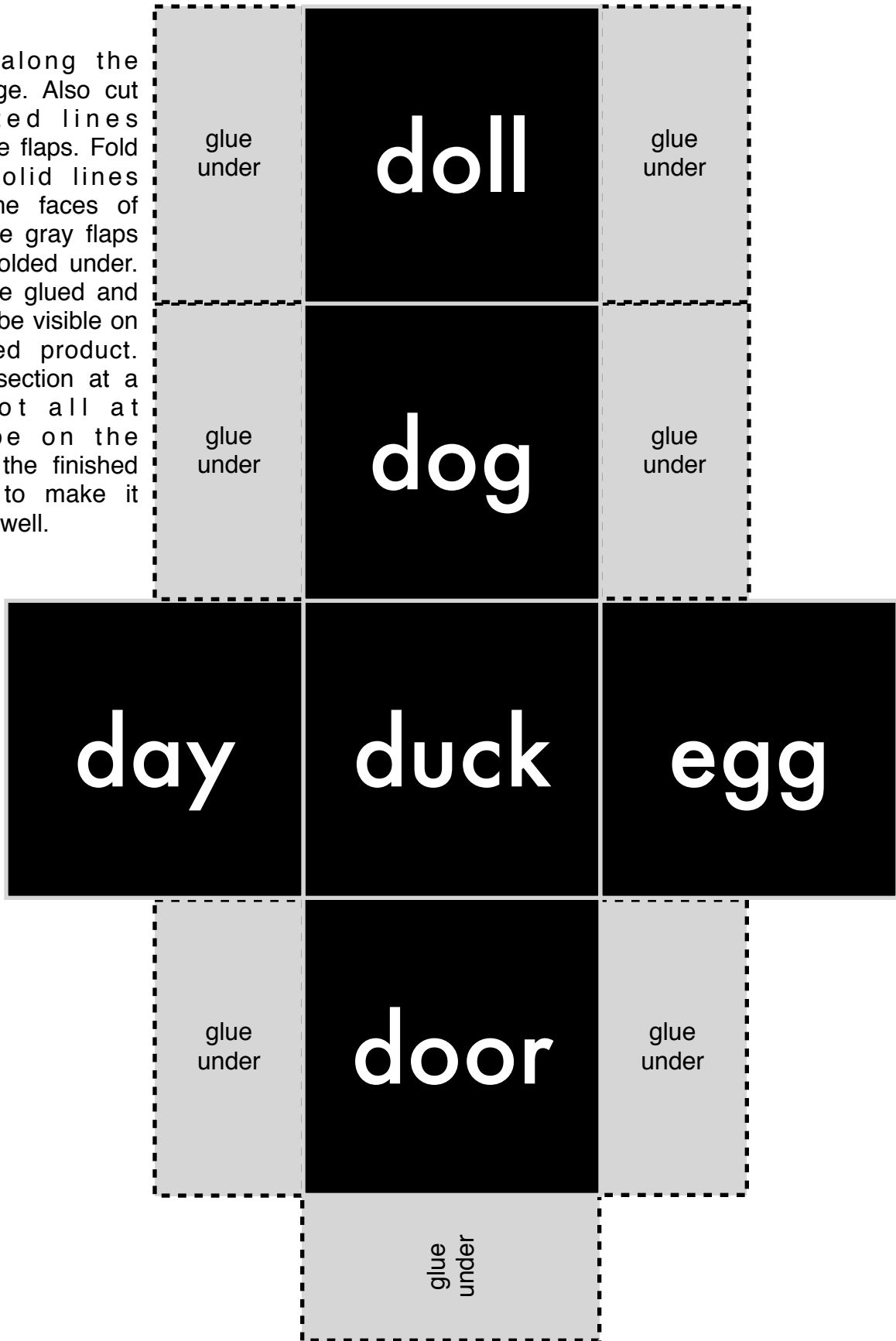
# Nouns Sight Words Dice

Cut out along the outside edge. Also cut the dotted lines between the flaps. Fold on the solid lines between the faces of the die. The gray flaps are to be folded under. They will be glued and should not be visible on the finished product. Glue one section at a time, not all at once. Tape on the outside of the finished die helps to make it sturdier, as well.



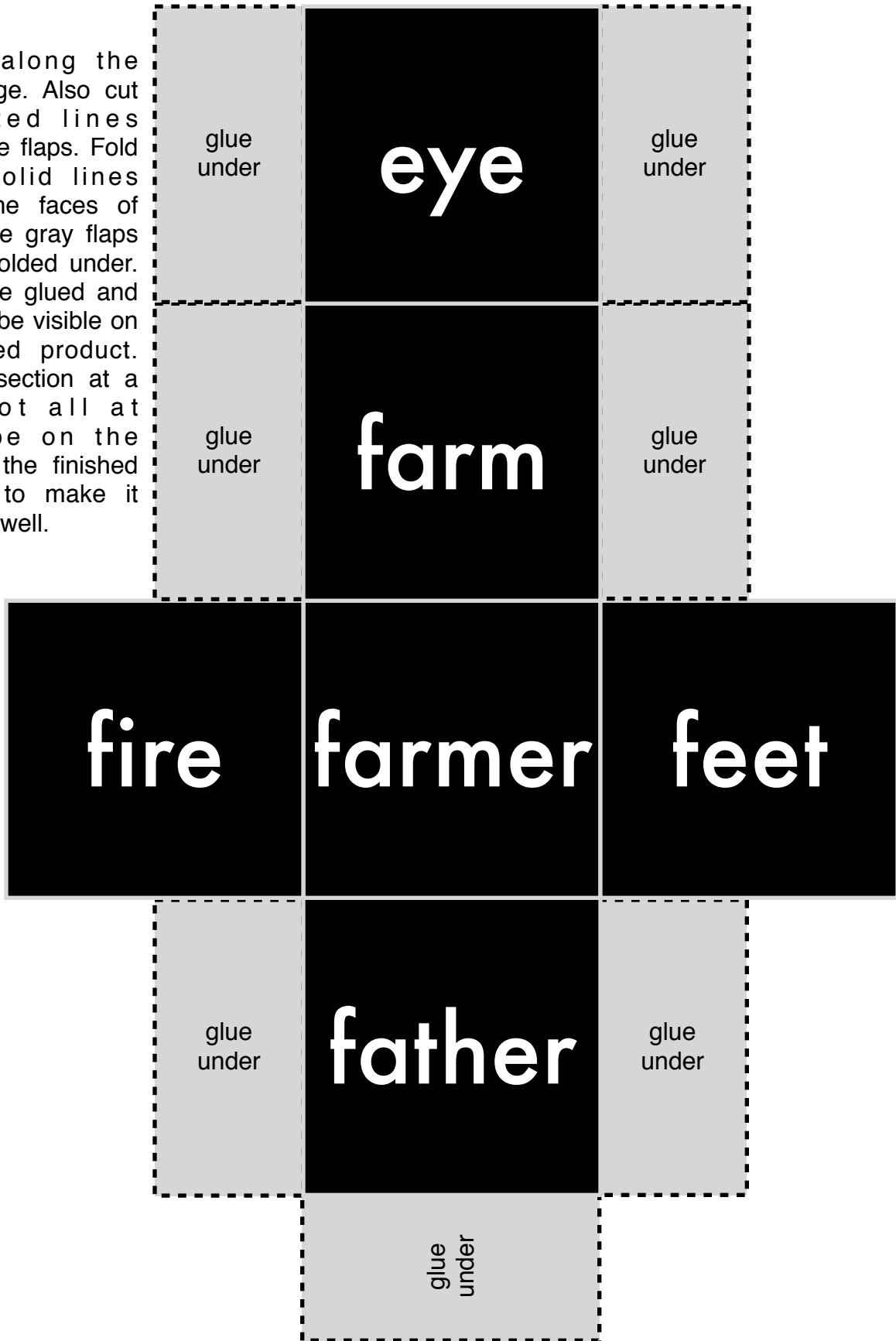
# Nouns Sight Words Dice

Cut out along the outside edge. Also cut the dotted lines between the flaps. Fold on the solid lines between the faces of the die. The gray flaps are to be folded under. They will be glued and should not be visible on the finished product. Glue one section at a time, not all at once. Tape on the outside of the finished die helps to make it sturdier, as well.



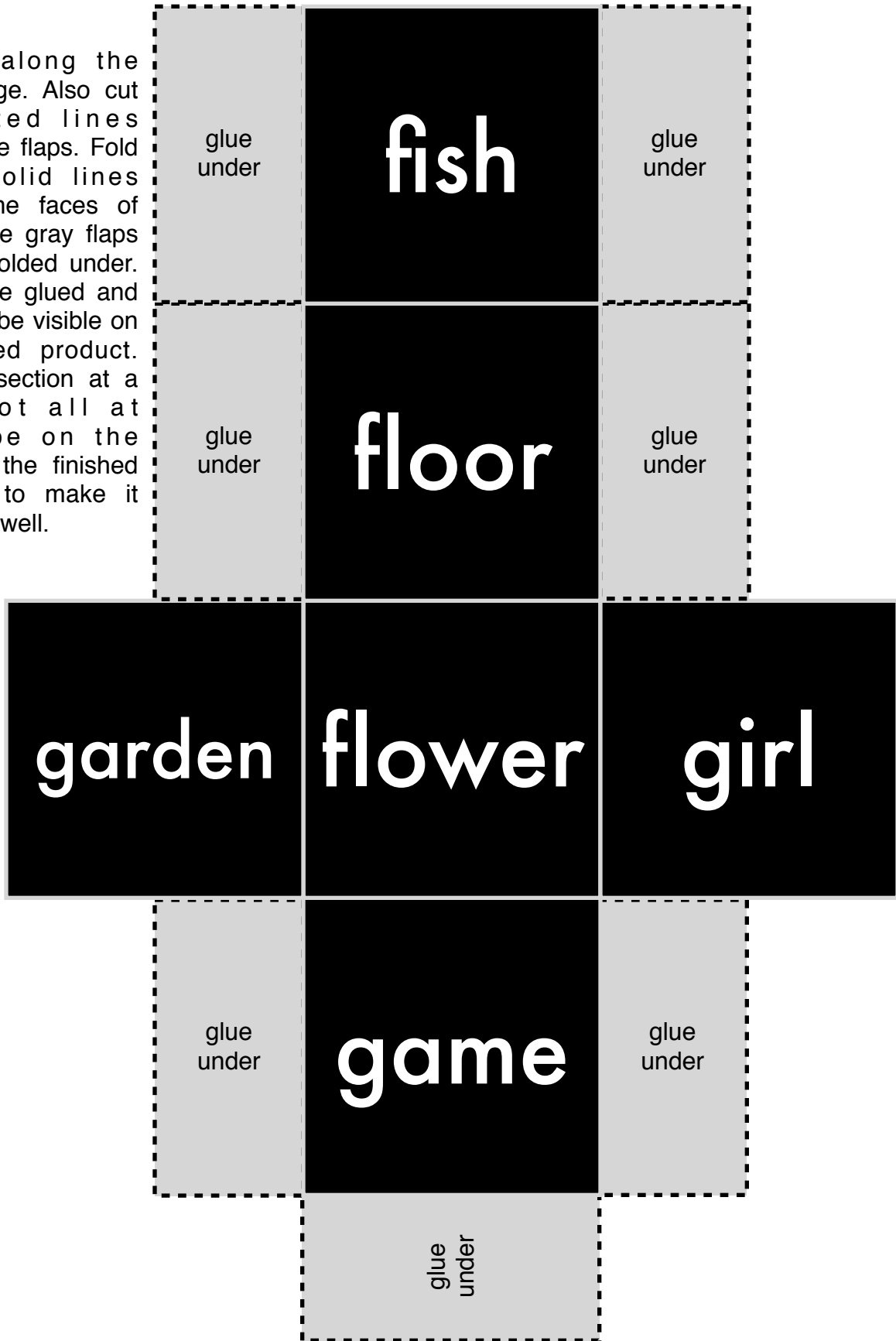
# Nouns Sight Words Dice

Cut out along the outside edge. Also cut the dotted lines between the flaps. Fold on the solid lines between the faces of the die. The gray flaps are to be folded under. They will be glued and should not be visible on the finished product. Glue one section at a time, not all at once. Tape on the outside of the finished die helps to make it sturdier, as well.



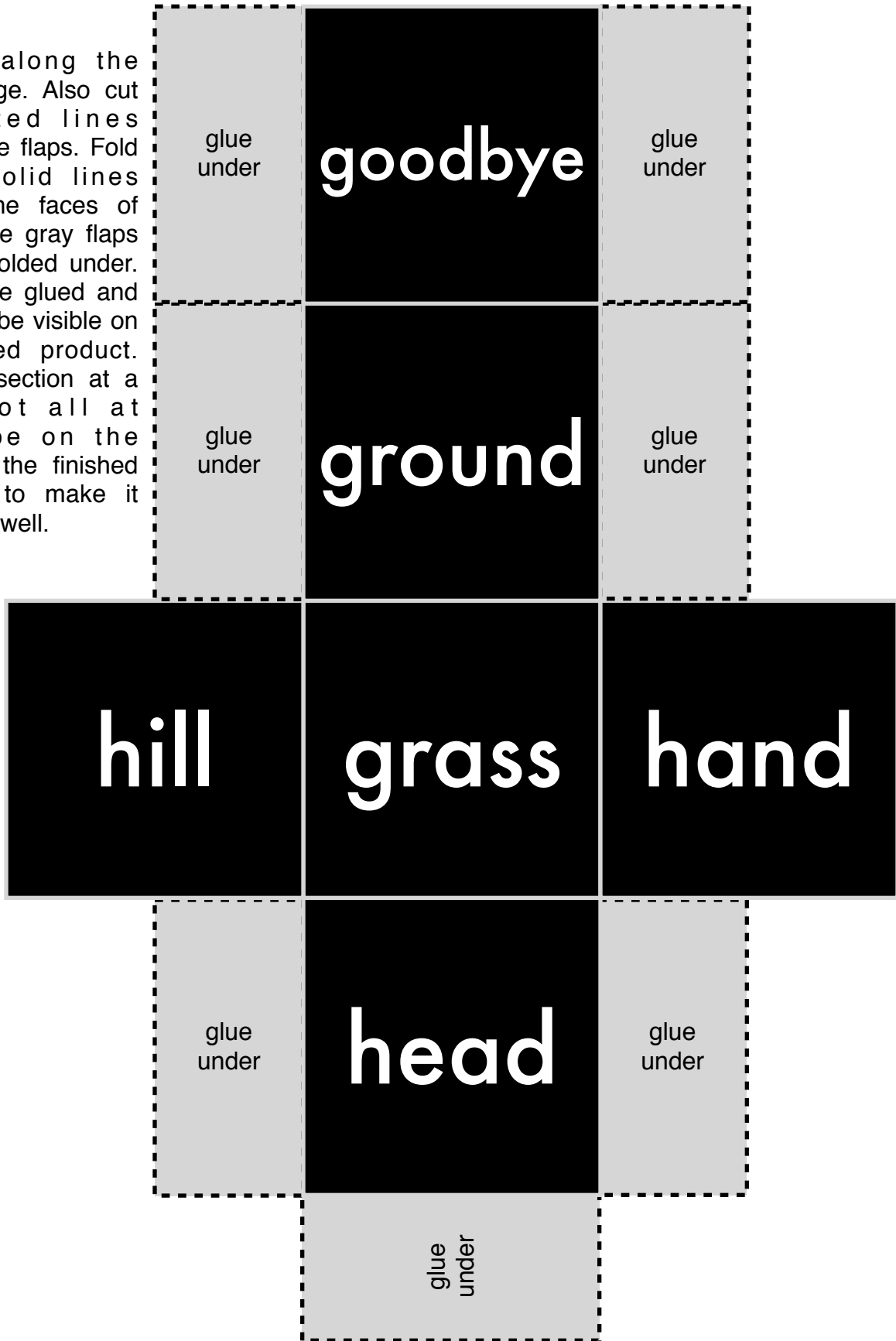
# Nouns Sight Words Dice

Cut out along the outside edge. Also cut the dotted lines between the flaps. Fold on the solid lines between the faces of the die. The gray flaps are to be folded under. They will be glued and should not be visible on the finished product. Glue one section at a time, not all at once. Tape on the outside of the finished die helps to make it sturdier, as well.



# Nouns Sight Words Dice

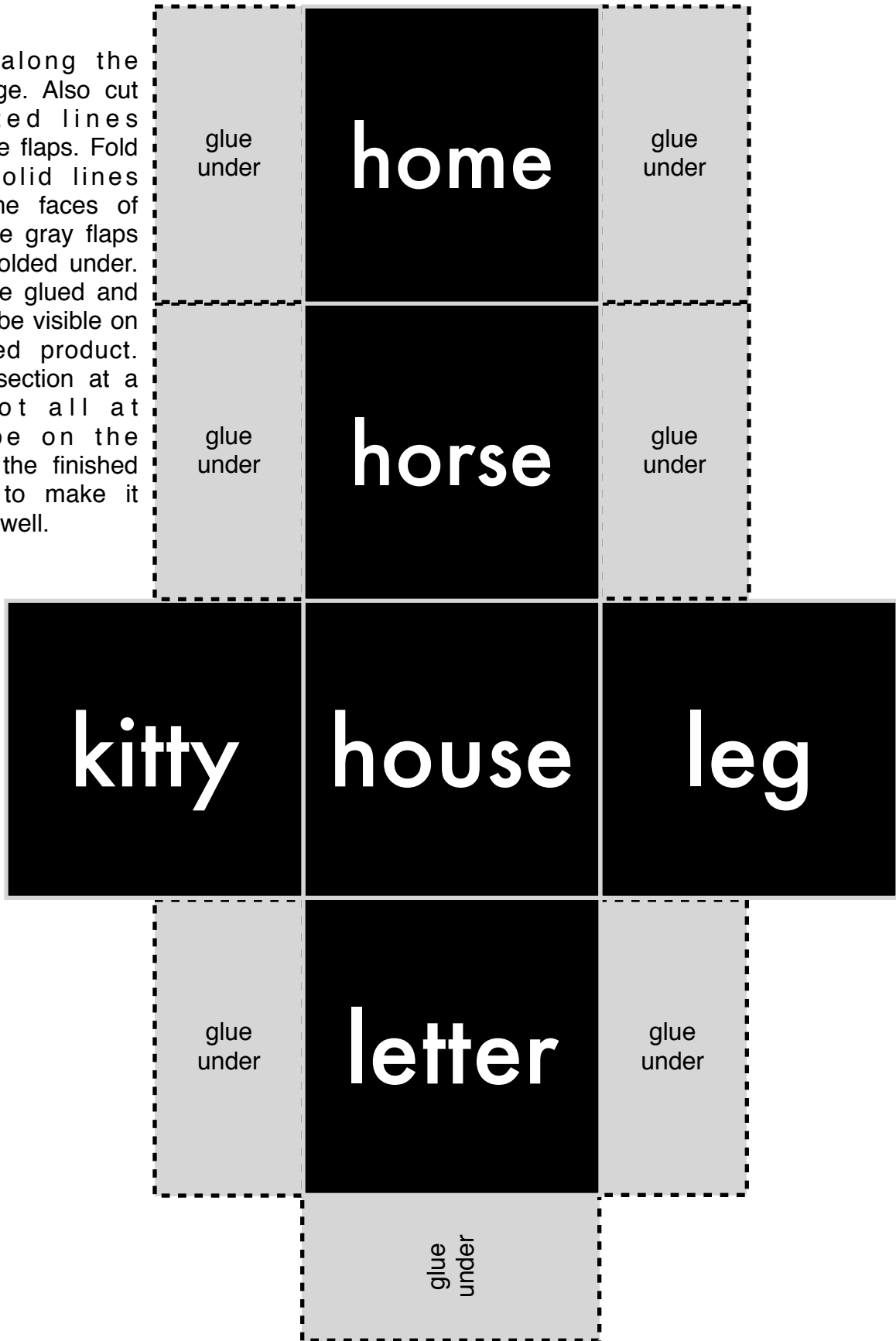
Cut out along the outside edge. Also cut the dotted lines between the flaps. Fold on the solid lines between the faces of the die. The gray flaps are to be folded under. They will be glued and should not be visible on the finished product. Glue one section at a time, not all at once. Tape on the outside of the finished die helps to make it sturdier, as well.





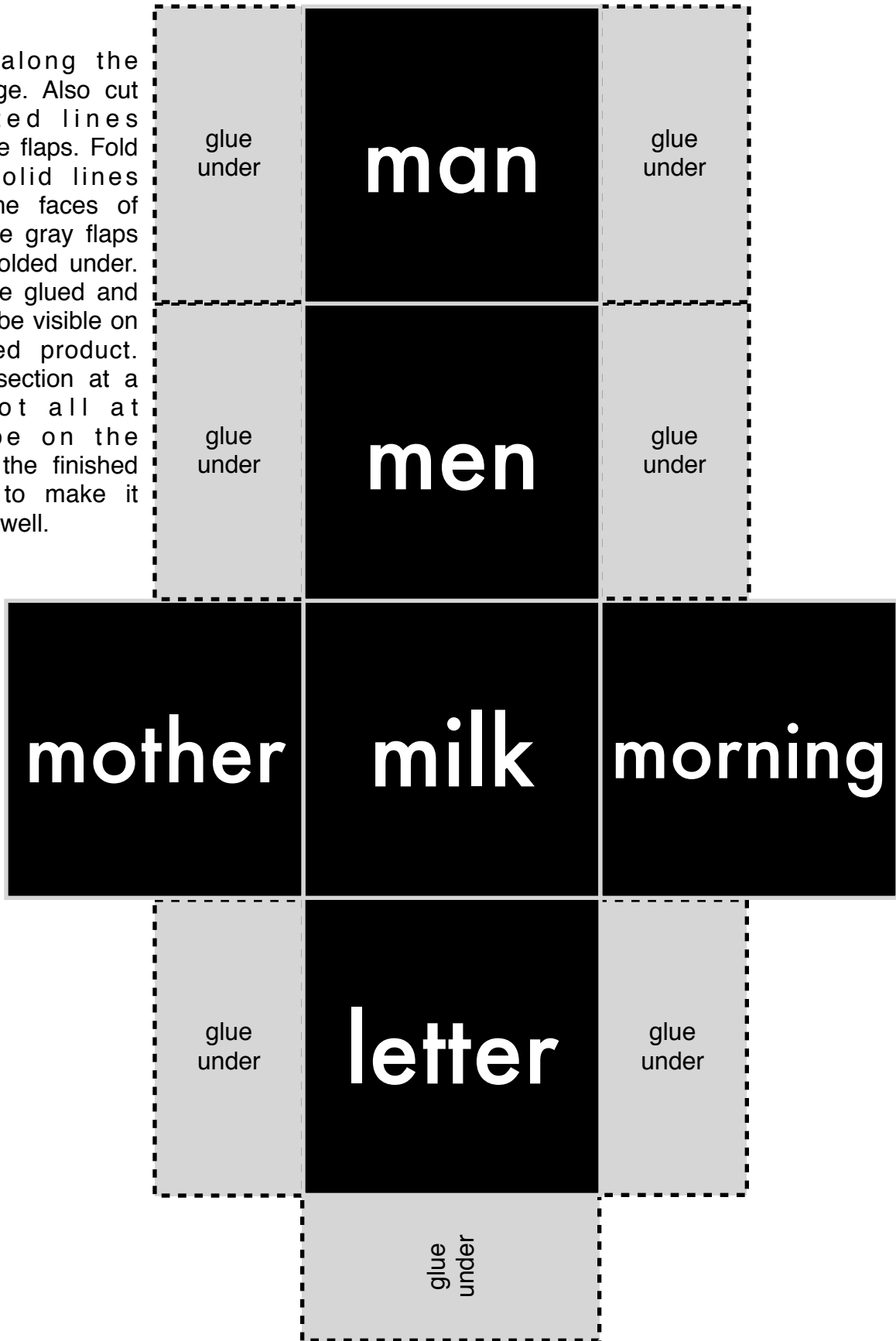
# Nouns Sight Words Dice

Cut out along the outside edge. Also cut the dotted lines between the flaps. Fold on the solid lines between the faces of the die. The gray flaps are to be folded under. They will be glued and should not be visible on the finished product. Glue one section at a time, not all at once. Tape on the outside of the finished die helps to make it sturdier, as well.



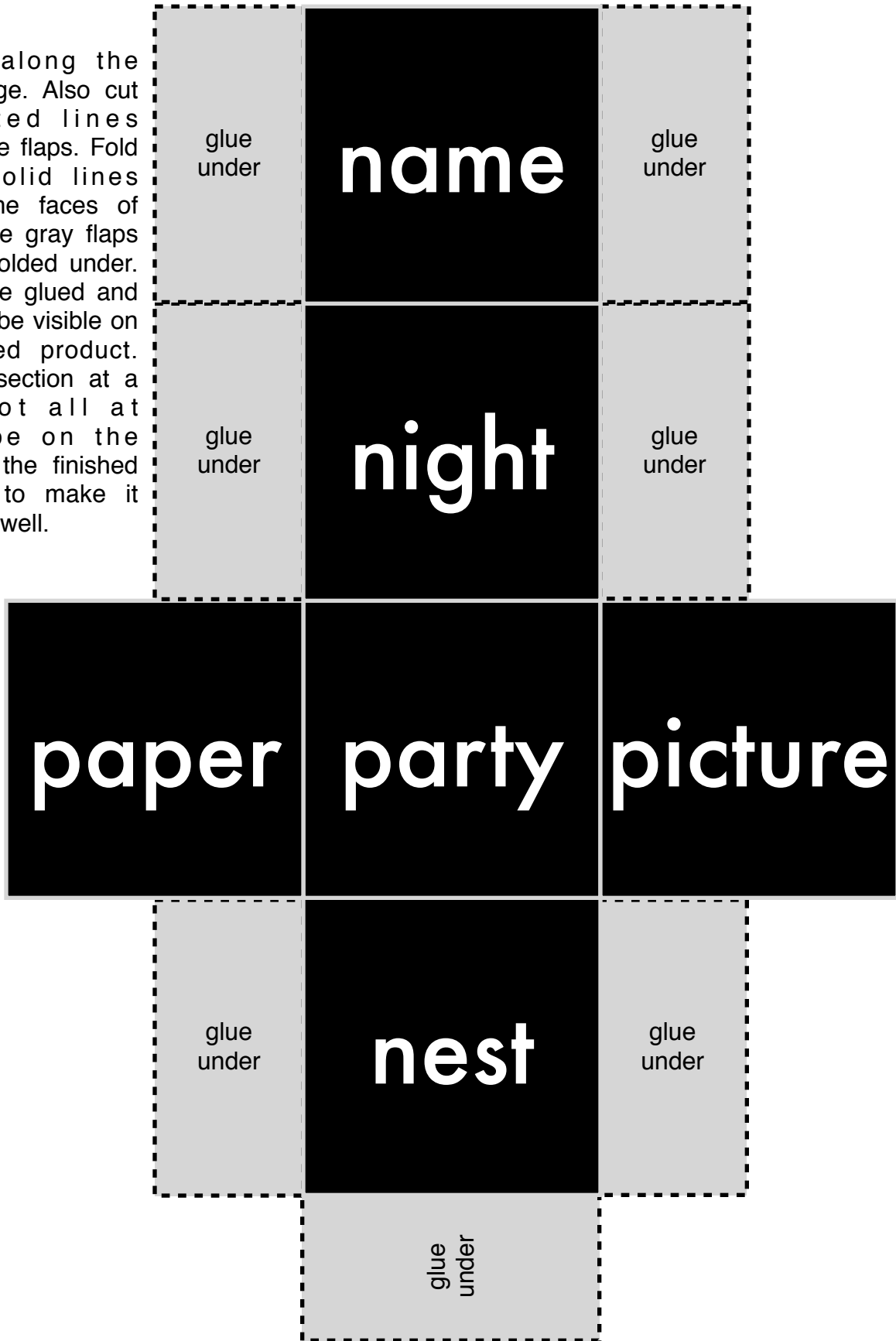
# Nouns Sight Words Dice

Cut out along the outside edge. Also cut the dotted lines between the flaps. Fold on the solid lines between the faces of the die. The gray flaps are to be folded under. They will be glued and should not be visible on the finished product. Glue one section at a time, not all at once. Tape on the outside of the finished die helps to make it sturdier, as well.



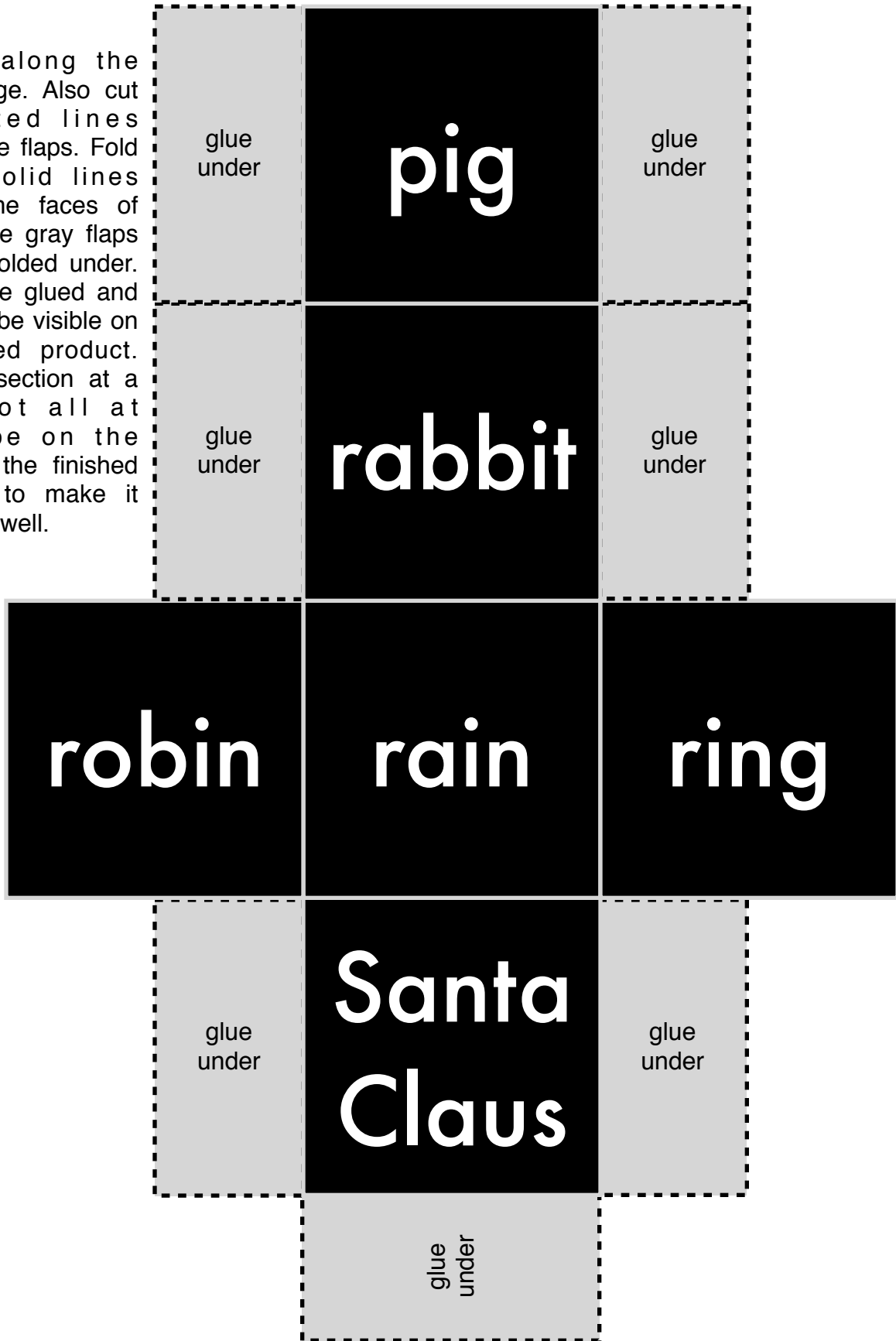
# Nouns Sight Words Dice

Cut out along the outside edge. Also cut the dotted lines between the flaps. Fold on the solid lines between the faces of the die. The gray flaps are to be folded under. They will be glued and should not be visible on the finished product. Glue one section at a time, not all at once. Tape on the outside of the finished die helps to make it sturdier, as well.



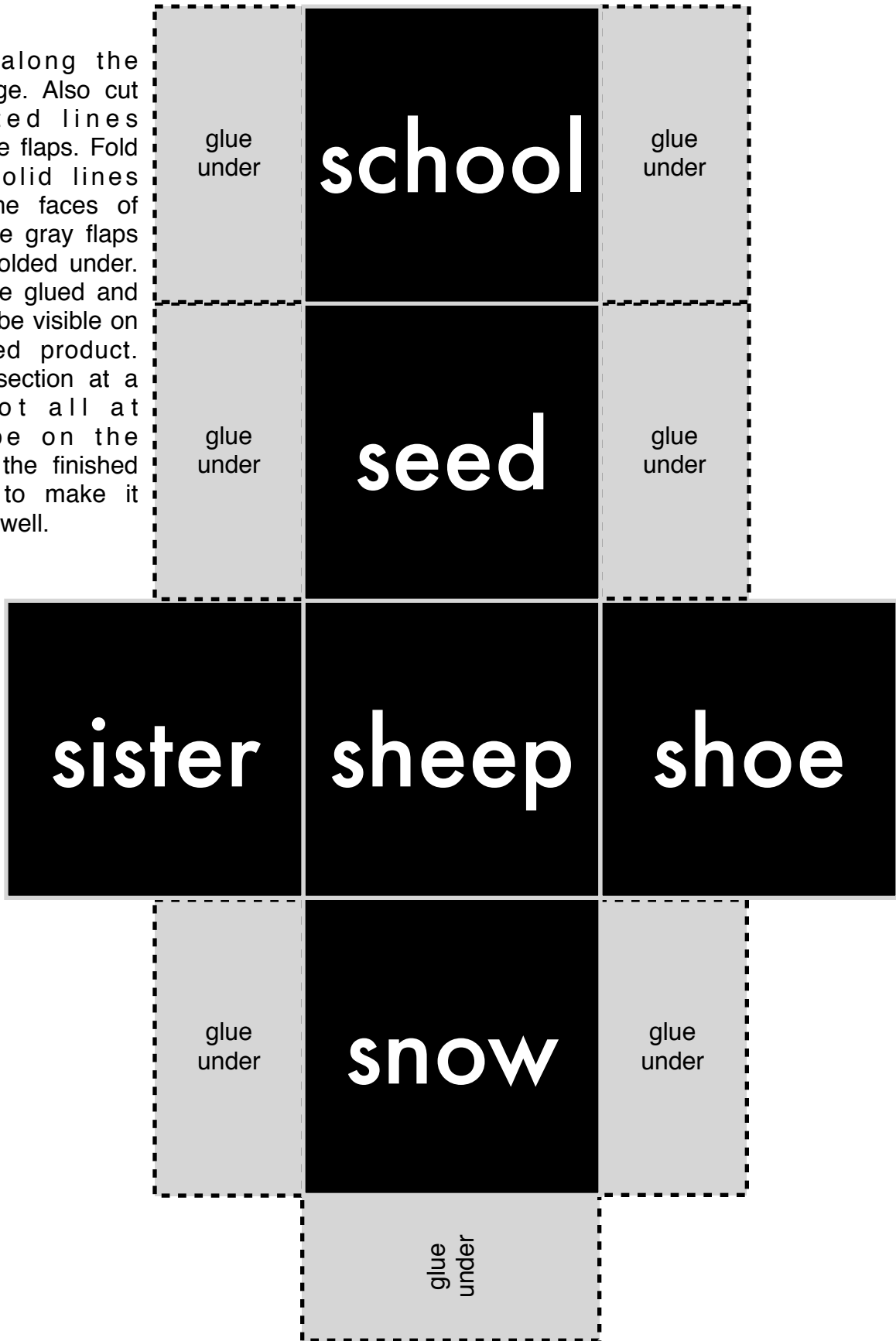
# Nouns Sight Words Dice

Cut out along the outside edge. Also cut the dotted lines between the flaps. Fold on the solid lines between the faces of the die. The gray flaps are to be folded under. They will be glued and should not be visible on the finished product. Glue one section at a time, not all at once. Tape on the outside of the finished die helps to make it sturdier, as well.



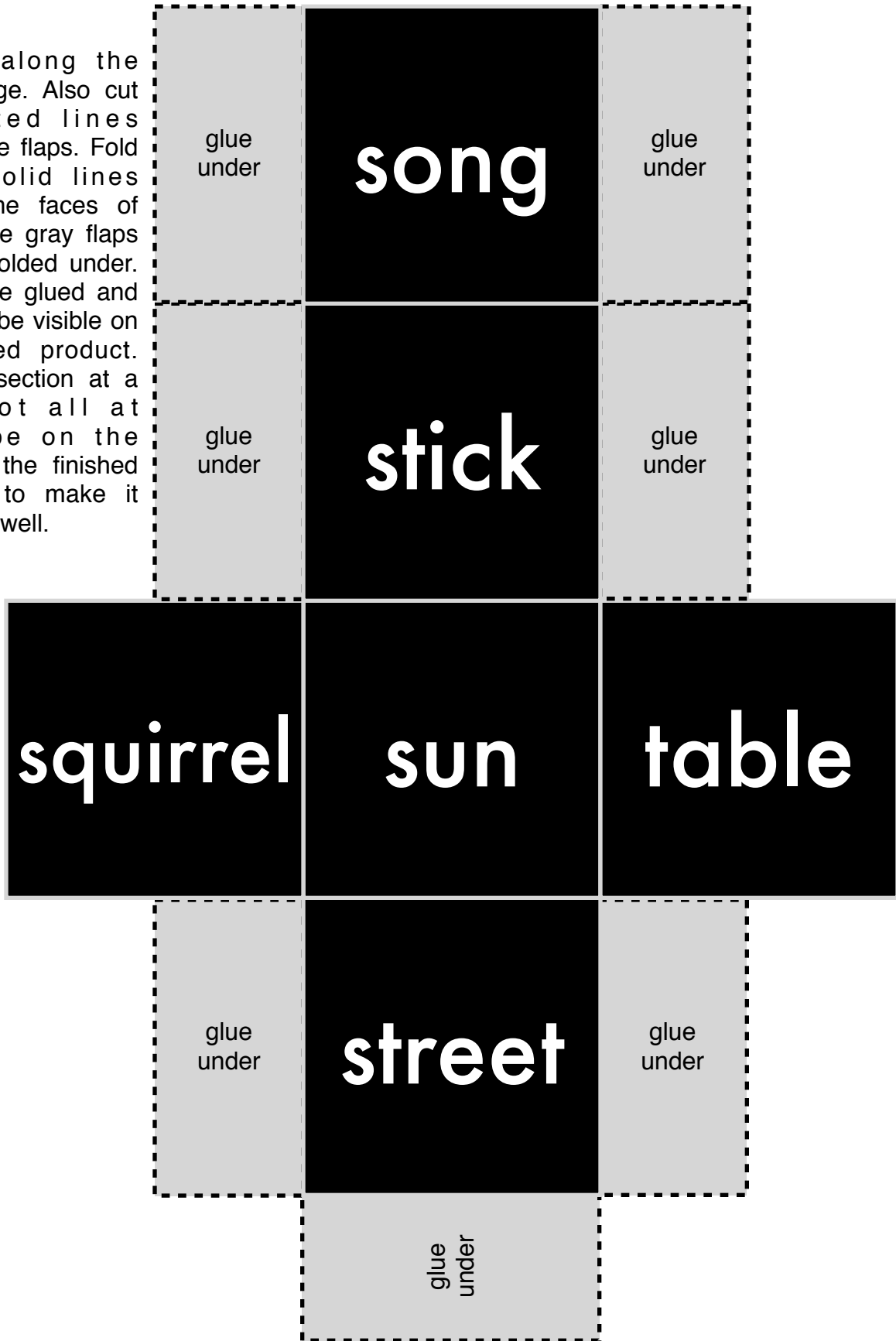
# Nouns Sight Words Dice

Cut out along the outside edge. Also cut the dotted lines between the flaps. Fold on the solid lines between the faces of the die. The gray flaps are to be folded under. They will be glued and should not be visible on the finished product. Glue one section at a time, not all at once. Tape on the outside of the finished die helps to make it sturdier, as well.



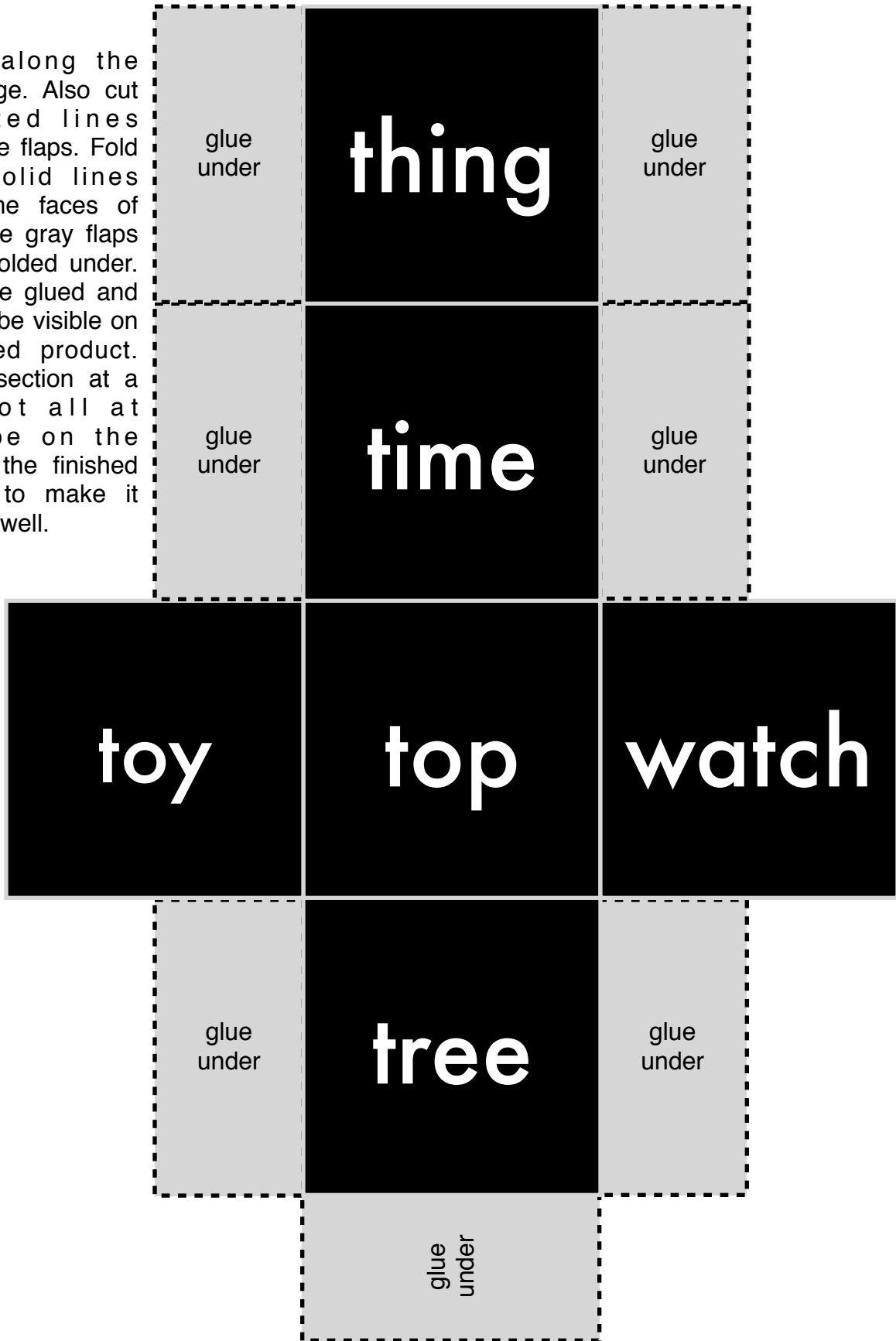
# Nouns Sight Words Dice

Cut out along the outside edge. Also cut the dotted lines between the flaps. Fold on the solid lines between the faces of the die. The gray flaps are to be folded under. They will be glued and should not be visible on the finished product. Glue one section at a time, not all at once. Tape on the outside of the finished die helps to make it sturdier, as well.



# Nouns Sight Words Dice

Cut out along the outside edge. Also cut the dotted lines between the flaps. Fold on the solid lines between the faces of the die. The gray flaps are to be folded under. They will be glued and should not be visible on the finished product. Glue one section at a time, not all at once. Tape on the outside of the finished die helps to make it sturdier, as well.



# Nouns Sight Words Dice

Cut out along the outside edge. Also cut the dotted lines between the flaps. Fold on the solid lines between the faces of the die. The gray flaps are to be folded under. They will be glued and should not be visible on the finished product. Glue one section at a time, not all at once. Tape on the outside of the finished die helps to make it sturdier, as well.

