

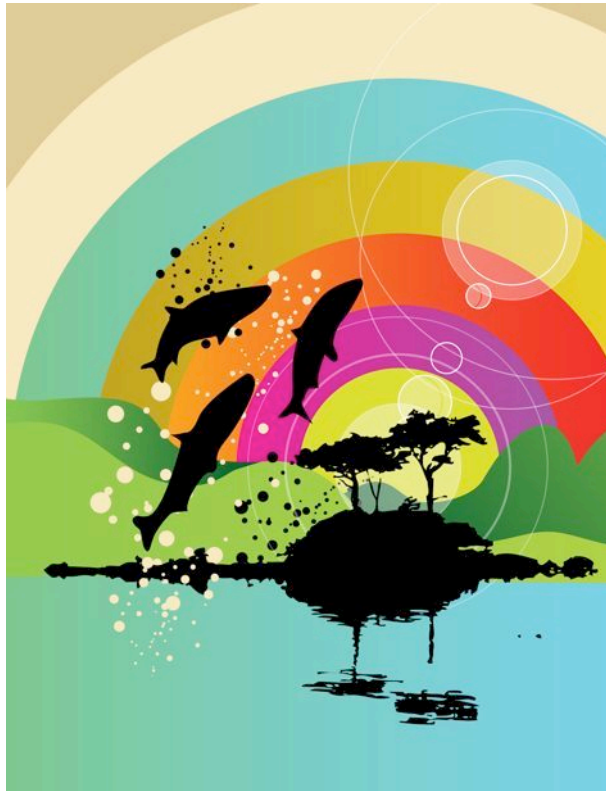
Crayon Boxes

A primary grades reading comprehension story collection

© 2014 by Andrew Frinkle and Little Learning Labs

TABLE OF CONTENTS:

- Red
- Orange
- Yellow
- Green
- Blue
- Purple
- Black
- White
- Gray
- Brown
- Pink



The themes focused on in this collection are:

- Colors
- Color Theory – warm, cool, primary, secondary...
- Spelling
- Repetitive sentence structures
- Sight words
- Holidays
- Adverbs of frequency: often, usually, sometimes, ...
- New topic-specific vocabulary in art.
- A variety of question types, including Yes/No, Multiple Choice, and Fill in the Blanks.

Suggested activities for extension of learning are:

- Coloring exercises
- Color identification, including color wheels
- Sorting and classification exercises
- Making a color book
- Illustrate one or more of the stories
- Investigations about light
- Investigations about how our eyes work



Red

By Andrew Frinkle

I am a color.

My name is **RED**.

You spell that **R-E-D**.

I am one of the three primary colors.

I am a warm color.



You can see me in many places!

Roses are often **red**.

Apples are **red**.

Fire trucks are **red**.

Candy canes are **red**.

Valentine's Day and other holidays use **red**.

Of course, a box of crayons needs a **red**!



Other colors are similar to **red**.

You might know: crimson, magenta, or pink...

1. YES OR NO: Is red a primary color?
 - A. Yes
 - B. No
2. YES OR NO: Is red a warm color?
 - A. Yes
 - B. No
3. Which of these is an example of something red?
 - A. grass
 - B. sky
 - C. apples
 - D. books
4. What holiday uses red?
 - A. Halloween
 - B. St. Patrick's Day
 - C. Valentine's Day
 - D. Thanksgiving
5. Which of these colors is similar to red?
 - A. black
 - B. white
 - C. brown
 - D. pink

Orange

By Andrew Frinkle

I am a color.

My name is **ORANGE**.

You spell that **O-R-A-N-G-E**.

I am one of the three secondary colors.

I am a warm color.

You can see me in many places!

Oranges are **orange**.

Tangerines are **orange**.

Tigers are **orange**.

Birds, like Orioles, are **orange**.

Halloween uses **orange** and black.

Of course, a box of crayons needs an **orange**!

Other colors are similar to **orange**.

You might know: tangerine, apricot, or amber...



1. YES OR NO: Is orange a primary color?
 - A. Yes
 - B. No
2. YES OR NO: Is orange a cool color?
 - A. Yes
 - B. No
3. Which of these is an example of something orange?
 - A. grass
 - B. tigers
 - C. apples
 - D. books
4. What holiday uses orange?
 - A. Halloween
 - B. St. Patrick's Day
 - C. Valentine's Day
 - D. Easter
5. Which of these colors is similar to orange?
 - A. black
 - B. blue
 - C. apricot
 - D. pink

Yellow

By Andrew Frinkle

I am a color.

My name is **YELLOW**.

You spell that **Y-E-L-L-O-W**.

I am one of the three primary colors.

I am a warm color.



1. YES OR NO: Is yellow a primary color?

- A. Yes
- B. No

2. YES OR NO: Is yellow a warm color?

- A. Yes
- B. No

3. Which of these is an example of something yellow?

- A. lemons
- B. trees
- C. apples
- D. oranges

4. What holiday uses yellow?

- A. Halloween
- B. St. Patrick's Day
- C. Valentine's Day
- D. Thanksgiving

5. Which of these colors is similar to yellow?

- A. gray
- B. pink
- C. apricot
- D. gold

You can see me in many places!

Lemons are **yellow**.

Ripe bananas are **yellow**.

Honey bees are **yellow** and black.

The sun looks **yellow**.

Thanksgiving uses **yellow** and other fall colors.

Of course, a box of crayons needs a **yellow**!



Other colors are similar to **yellow**.

You might know: dandelion, maize, and gold...

Green

By Andrew Frinkle

I am a color.

My name is **GREEN**.

You spell that **G-R-E-E-N**.

I am one of the three secondary colors.

I am a cool color.

You can see me in many places!

Grass is a very nice **green**.

Tree leaves are usually **green**.

Unripe fruits are often **green**.

Someone's eyes can be **green**.

St. Patrick's Day uses **green**.

Of course, a box of crayons needs a **green**!



Other colors are similar to **green**.

You might know: teal, jade, or sea green...



1. YES OR NO: Is green a secondary color?
 - A. Yes
 - B. No
2. YES OR NO: Is green a cool color?
 - A. Yes
 - B. No
3. Which of these is an example of something green?
 - A. lemons
 - B. tree leaves
 - C. apples
 - D. oranges
4. What holiday uses green?
 - A. Independence Day
 - B. St. Patrick's Day
 - C. Valentine's Day
 - D. Christmas
5. Which of these colors is NOT similar to green?
 - A. teal
 - B. pink
 - C. jade
 - D. sea green

Blue

By Andrew Frinkle

I am a color.

My name is **BLUE**.

You spell that **B-L-U-E**.

I am one of the three primary colors.

I am a cool color.

You can see me in many places!

The sky is light **blue**.

The water usually looks **blue**.

Birds, like blue jays, are often **blue**.

Butterflies might be **blue**.

Independence Day uses red, white, and **blue**.

Of course, a box of crayons needs a **blue**!

Other colors are similar to **blue**.

You might know: aquamarine, cerulean, or baby blue...



1. YES OR NO: Is blue a secondary color?
 - A. Yes
 - B. No
2. YES OR NO: Is blue a warm color?
 - A. Yes
 - B. No
3. Which of these is an example of something blue?
 - A. the sky
 - B. tree leaves
 - C. plums
 - D. oranges
4. What holiday uses blue?
 - A. Independence Day
 - B. St. Patrick's Day
 - C. Valentine's Day
 - D. Christmas
5. Which of these colors is NOT similar to blue?
 - A. baby blue
 - B. aquamarine
 - C. cerulean
 - D. yellow

Purple

By Andrew Frinkle

I am a color.

My name is **PURPLE**.

You spell that **P-U-R-P-L-E**.

I am one of the three secondary colors.

I am a cool color.

You can see me in many places!

Violets are light **purple**.

Lavender flowers are **purple**.

Sunsets can be **purple**.

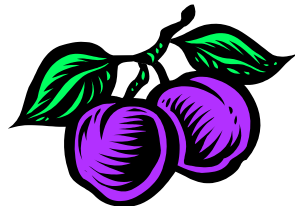
Plums are **purple**.

Valentine's Day or Halloween might use **purple**.

Of course, a box of crayons needs a **purple**!

Other colors are similar to **purple**.

You might know: violet, lavender, or fuchsia...



1. YES OR NO: Is purple a secondary color?
 - A. Yes
 - B. No
2. YES OR NO: Is purple a cool color?
 - A. Yes
 - B. No
3. Which of these is an example of something purple?
 - A. the sky
 - B. tree leaves
 - C. plums
 - D. oranges
4. What holiday uses purple?
 - A. Independence Day
 - B. St. Patrick's Day
 - C. Valentine's Day
 - D. Christmas
5. Which of these colors is NOT similar to purple?
 - A. red
 - B. violet
 - C. lavender
 - D. fuchsia

Black

By Andrew Frinkle

I am a color.

My name is **BLACK**.

You spell that **B-L-A-C-K**.

I am not a primary or secondary color.

I make other colors darker.

You can see me in many places!

The night sky is **black**.

Coal is very **black**.

Limousines look great in **black**.

A man's tuxedo is usually **black**.

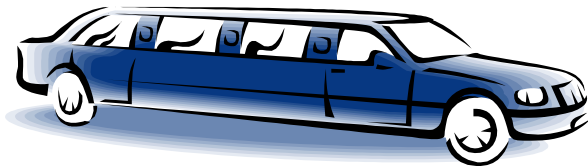
Halloween uses orange and **black**.

Of course, a box of crayons needs a **black**!



There is only one true **black**.

White is its opposite.



1. YES OR NO: Is black a primary or secondary color?

- A. Yes
- B. No

2. FILL IN THE BLANK: I make other colors _____ .

- A. brighter
- B. lighter
- C. darker
- D. dark

3. Which of these is NOT an example of something black?

- A. coal
- B. the night sky
- C. apples
- D. a tuxedo

4. What holiday uses black?

- A. Easter
- B. Thanksgiving
- C. Christmas
- D. Halloween

5. YES OR NO: Is gray black's opposite?

- A. Yes
- B. No

White

By Andrew Frinkle

I am a color.

My name is **WHITE**.

You spell that **W-H-I-T-E**.

I am not a primary or secondary color.

I make other colors lighter.

You can see me in many places!

Daisies are **white**.

Cake frosting can be **white**.

Snow is **white**.

Clouds are usually **white**.

Christmas uses red, green, and **white**.

Of course, a box of crayons needs a **white**!

There is only one true **white**.

Black is its opposite.

Other colors are similar to **white**.

You might know: off-white, ivory, or vanilla...



1. YES OR NO: Is white a primary or secondary color?
 - A. Yes
 - B. No
2. FILL IN THE BLANK: I make other colors _____.
 - A. brighter
 - B. lighter
 - C. darker
 - D. dark
3. Which of these is NOT an example of something white?
 - A. grass
 - B. snow
 - C. daisies
 - D. clouds
4. What holiday uses white?
 - A. St. Patrick's Day
 - B. Thanksgiving
 - C. Christmas
 - D. Halloween
5. YES OR NO: Is white black's opposite?
 - A. Yes
 - B. No

Gray

By Andrew Frinkle

I am a color.

My name is **GRAY**.

You spell that **G-R-A-Y** or sometimes **G-R-E-Y**.

I am not a primary or secondary color.

I am between black and white.

You can see me in many places!

Storm clouds are **gray**.

Smoke is **gray**.

Concrete is **gray**.

Stone can be **gray**.

Holidays don't use **gray**.

However, a box of crayons still needs a **gray**!



There are many shades of **gray**.

You might know: charcoal, pewter, or taupe...



1. YES OR NO: Is gray a primary or secondary color?
 - A. Yes
 - B. No
2. FILL IN THE BLANK: I am _____ black and white.
 - A. the same as
 - B. different from
 - C. between
 - D. not like
3. Which of these is NOT an example of something gray?
 - A. smoke
 - B. the sun
 - C. stone
 - D. storm clouds
4. YES OR NO: Do holidays use gray?
 - A. Yes
 - B. No
5. Which of these colors is NOT similar to gray?
 - A. charcoal
 - B. pewter
 - C. lavender
 - D. taupe

Brown

By Andrew Frinkle

I am a color.

My name is **BROWN**.

You spell that **B-R-O-W-N**.

I am not a primary or secondary color.

You get me by mixing other colors.

You can see me in many places!

Fall leaves turn **brown**.

Chocolate is usually **brown**.

Tree trunks are mostly **brown**.

People's eyes are usually **brown**.

Thanksgiving uses **brown**.

Of course, a box of crayons needs a **brown**!

Other colors are similar to **brown**.

You might know: chocolate, sienna, or tan...



1. YES OR NO: Is brown a primary or secondary color?
 - A. Yes
 - B. No

2. FILL IN THE BLANK: You get me by _____ other colors.
 - A. eating
 - B. taking
 - C. using
 - D. mixing

3. Which of these is NOT an example of something brown?
 - A. fall leaves
 - B. tree trunks
 - C. daisies
 - D. people's eyes

4. What holiday uses brown?
 - A. Easter
 - B. Thanksgiving
 - C. Christmas
 - D. Halloween

5. Which of these colors is NOT similar to brown?
 - A. charcoal
 - B. tan
 - C. sienna
 - D. chocolate

Pink

By Andrew Frinkle

I am a color.

My name is **PINK**.

You spell that **P-I-N-K**.

I am not a primary or secondary color.

I am similar to red, but cuter!



You can see me in many places!

Many girls like to wear clothes that are **pink**.

Piglets are usually **pink**.

Your lips might look **pink**.

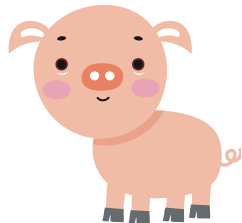
Yogurt can be **pink**.

Valentine's Day uses **pink** and red.

Of course, a box of crayons needs a **pink**!

Other colors are similar to **pink**.

You might know: coral, salmon, or peach...



1. YES OR NO: Is pink a primary or secondary color?
 - A. Yes
 - B. No

2. FILL IN THE BLANKS: I am _____ red, but cuter!
 - A. next to
 - B. almost like
 - C. similar to
 - D. nicer than

3. Which of these is NOT an example of something pink?
 - A. girls' clothing
 - B. piglets
 - C. yogurt
 - D. leaves

4. What holiday uses pink?
 - A. Valentine's Day
 - B. Thanksgiving
 - C. Christmas
 - D. Halloween

5. Which of these colors is NOT similar to pink?
 - A. coral
 - B. salmon
 - C. peach
 - D. tan

COMPREHENSION STORIES ANSWER KEY

Red:

1. A
2. A
3. C
4. C
5. D

Green:

1. A
2. A
3. B
4. B
5. D

Black:

1. B
2. C
3. C
4. D
5. B

Brown:

1. B
2. D
3. C
4. B
5. A

Orange:

1. B
2. B
3. B
4. A
5. C

Blue:

1. B
2. B
3. A
4. A
5. D

White:

1. B
2. B
3. A
4. C
5. A

Pink:

1. B
2. C
3. D
4. A
5. D

Yellow:

1. A
2. A
3. A
4. D
5. D

Purple:

1. A
2. A
3. C
4. C
5. A

Gray:

1. B
2. C
3. B
4. B
5. C