

glue under

glue under

**Aa**

[www.LittleLearningLabs.com](http://www.LittleLearningLabs.com)

glue under

glue under

**Bb**

glue under

**Ee**

**Cc**

**Ff**

glue under

**Dd**

glue under

directions: cut along dotted lines. fold along solid lines. then put glue on all 'glue under' tabs and assemble carefully.

directions: cut along dotted lines. fold along solid lines. then put glue on all 'glue under' tabs and assemble carefully

glue under



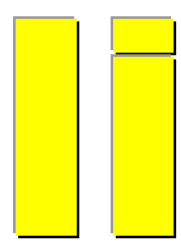
www.LittleLearningLabs.com

glue under

glue under

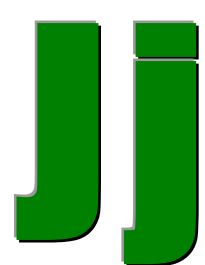
glue under

glue under



glue under

glue under



glue under

glue under

**M m**

[www.LittleLearningLabs.com](http://www.LittleLearningLabs.com)

glue under

glue under

**N n**

glue under

**Q q**

**O o**

**R r**

glue under

**P p**

glue under

directions: cut along dotted lines. fold along solid lines. then put glue on all 'glue under' tabs and assemble carefully

glue under

glue under

**Ss**

[www.LittleLearningLabs.com](http://www.LittleLearningLabs.com)

glue under

glue under

**Tt**

glue under

directions: cut along dotted lines. fold along solid lines. then put glue on all 'glue under' tabs and assemble carefully

**Ww**

**Uu**

**Xx**

glue under

**Vv**

glue under

directions: cut along dotted lines. fold along solid lines. then put glue on all 'glue under' tabs and assemble carefully

glue under



[www.LittleLearningLabs.com](http://www.LittleLearningLabs.com)

glue under

glue under

glue under

glue under



glue under

glue under



glue under

glue under

**Aa**

[www.LittleLearningLabs.com](http://www.LittleLearningLabs.com)

glue under

glue under

**Bb**

glue under

**Ee**

**Cc**

**Ff**

glue under

**Dd**

glue under

directions: cut along dotted lines. fold along solid lines. then put glue on all 'glue under' tabs and assemble carefully.

directions: cut along dotted lines. fold along solid lines. then put glue on all 'glue under' tabs and assemble carefully.

glue under

**Gg**

[www.LittleLearningLabs.com](http://www.LittleLearningLabs.com)

glue under

glue under

glue under

glue under

**Hh**

**Kk**

**Ii**

**Ll**

glue under

glue under

**Jj**

glue under

glue under

**M m**

[www.LittleLearningLabs.com](http://www.LittleLearningLabs.com)

glue under

glue under

**N n**

glue under

**Q q**

**O o**

**R r**

glue under

**P p**

glue under

directions: cut along dotted lines. fold along solid lines. then put glue on all 'glue under' tabs and assemble carefully.



glue under

glue under

**Ss**

www.LittleLearningLabs.com

glue under

glue under

**Tt**

glue under

directions: cut along dotted lines. fold along solid lines. then put glue on all 'glue under' tabs and assemble carefully.

**Ww**

**Uu**

**Xx**

glue under

**Vv**

glue under

directions: cut along dotted lines. fold along solid lines. then put glue on all 'glue under' tabs and assemble carefully.

glue under

**Yy**

[www.LittleLearningLabs.com](http://www.LittleLearningLabs.com)

glue under

glue under

glue under

glue under

**Zz**

**,**

**.**

**!**

glue under

glue under

**er**

directions: cut along dotted lines. fold along solid lines. then put glue on all 'glue under' tabs and assemble carefully.

glue under

Aa

www.LittleLearningLabs.com

glue under

glue under

glue under

glue under

Bb

Ee

Cc

Ff

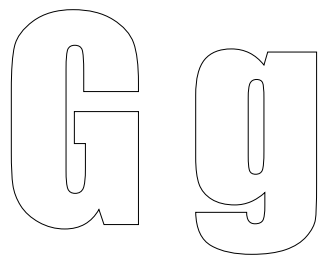
glue under

glue under

Dd

directions: cut along dotted lines. fold along solid lines. then put glue on all 'glue under' tabs and assemble carefully.

glue under



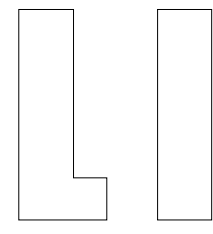
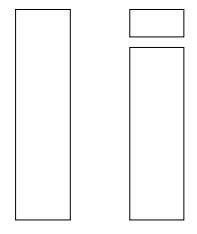
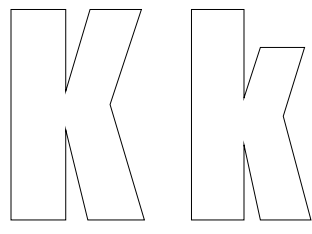
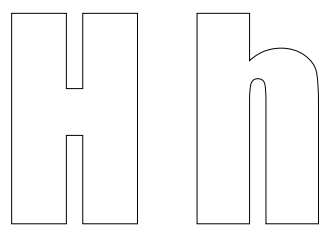
www.LittleLearningLabs.com

glue under

glue under

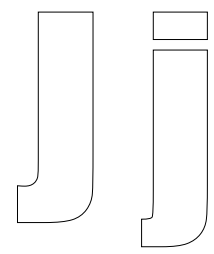
glue under

glue under



glue under

glue under



directions: cut along dotted lines. fold along solid lines. then put glue on all 'glue under' tabs and assemble carefully.

glue under

M m

[www.LittleLearningLabs.com](http://www.LittleLearningLabs.com)

glue under

glue under

glue under

glue under

N n

Q q

O o

R r

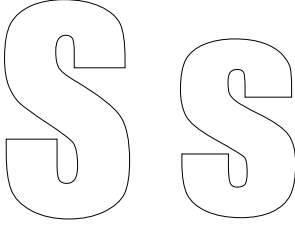
glue under

glue under

P p

directions: cut along dotted lines. fold along solid lines. then put glue on all 'glue under' tabs and assemble carefully.

glue under



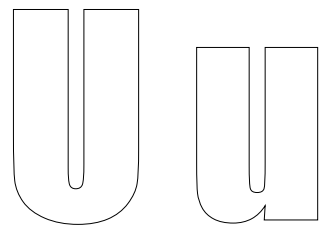
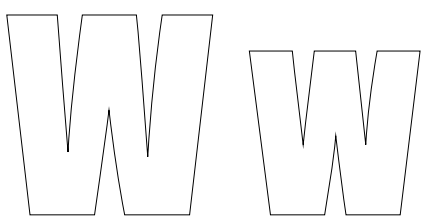
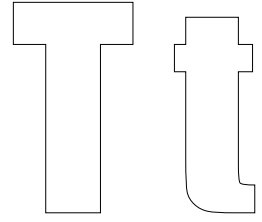
www.LittleLearningLabs.com

glue under

glue under

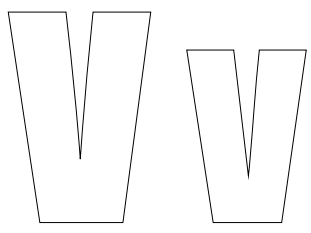
glue under

glue under



glue under

glue under



directions: cut along dotted lines. fold along solid lines. then put glue on all 'glue under' tabs and assemble carefully.

glue under



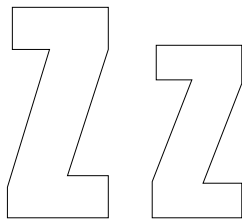
[www.LittleLearningLabs.com](http://www.LittleLearningLabs.com)

glue under

glue under

glue under

glue under



glue under

glue under



## **HOW TO MAKE YOUR DICE:**

Note that there are 3 styles. You don't have to make each. Make whichever ones suit your purpose.

First, these are best done on card stock. If you can laminate that before assembly, that's even better. Assemble the dice, cutting on the dotted lines and folding on solid lines. Put glue on the small tabs and assembled carefully. Once your dice set is completed, you can begin using them.

- **COLORED STYLE:** The colored letters are best for a color printer. You can still add some decoration around the edges if you want.
- **BOLD BLACK STYLE:** You can color in the background on the bold black letter dice to add visual interest. Stickers or other designs might be welcome, too. These might be preferred if you don't have a color printer.
- **OUTLINE STYLE:** For the outline letters, it was assumed you might want students to color in the letters in solid colors or in color patterns that denotes their team. These also work great if you don't have a color printer.

## **HOW TO USE YOUR DICE:**

- **Know Your Letters:** Roll a die. Say the letter that ends facing up. (1+ players)
- **Know Your Letters Challenge:** Roll a die. The first person that can say the letter gets a point/token/prize. You can ignore the punctuation marks or do something special with them. (2+ players)
- **Know Your Vocab:** Roll a die. Say a word that starts with or contains that letter. (1+ players)
- **Know Your Vocab Challenge:** Roll a die. The first person that says a word that starts with that letter gets a point/token/prize. You can ignore the punctuation marks or do something special with them. (2+ players)
- **Letter Chain Memory:** Roll a die. Say a word that starts with that letter. Then, the next person rolls, says your word, and adds a new word starting with the new letter to the list. Keep going until someone can't keep the chain going... Ignore the punctuation marks. (2+ players)
- **Before and After:** Roll a die. Say the letter facing up. Tell which letter comes BEFORE and which letter comes AFTER it in the alphabet. (1+ players)